

How to Order?

Series No.	Ways	Positions	Port size	Button type	Thread type
MV MJ M	3: 3 ways 5: 5 ways	2: 2 position	06: 1/8" 08: 1/4"	Blank: No button S1B: The button with arrow mark(Black) S2: Roller type S3R: Button with "Reset" mark(Red) S4G: Concave button(Green) S5R: Flat button(Red) S6R: Mushroom head button(Red) S6B: Mushroom head button(Black) Note: S1 and S3 with manual return, Others with spring return.	Blank: G P : PT T : NPT

Order Example:

M series mechanical valve, 3/2 way, 1/8" port size, with black button with arrow mark, G thread, ERP code is: M32-06S1B

Note: Button mechanical valve assembly comprising: a Button component, the mounting bracket, under mounting brackets and mounting screws.

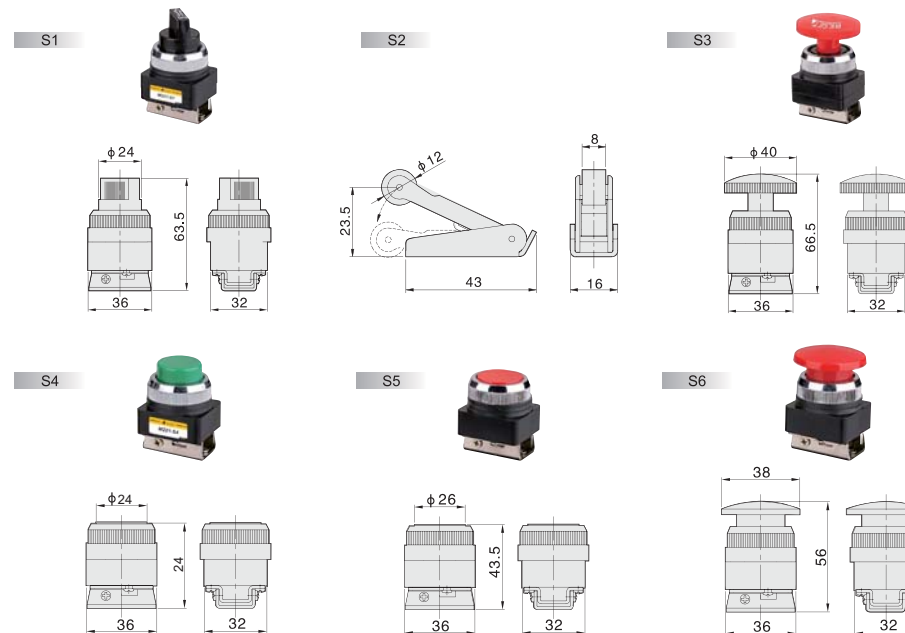
Product Features

- * Black color is standard color, different colors are optional
- * Controlled by mechanical force
- * Various buttons are available

Specifications

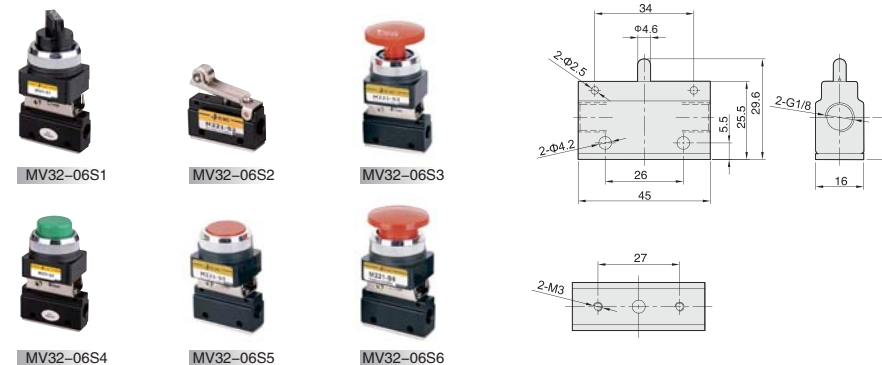
Model	MS32-06	MJ32-08	M32-08	M52-08
Working medium	Clean air(After 40 μm filtration)			
Acting type	External control			
Lubrication	Not required			
Working pressure (MPa)	0-0.8			
Guaranteed pressure (MPa)	1.2			
Working temperature (°C)	-5-60			
Max. acting frequency	5 cycles/s			
Port size	1/8 , 1/4			

Main Dimensions for Button

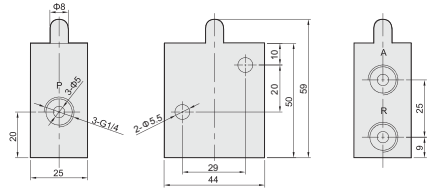


Main Dimension

Mv32 Series

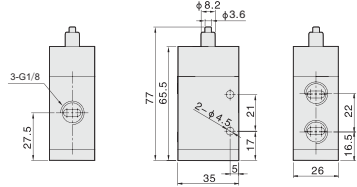


MJ32 Series



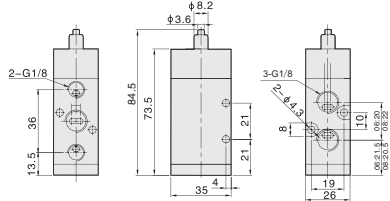
MJ32-08S1 MJ32-08S2 MJ32-08S3 MJ32-08S4 MJ32-08S5 MJ32-08S6

M32 Series



M32-08S1 M32-08S2 M32-08S3 M32-08S4 M32-08S5 M32-08S6 M32-08

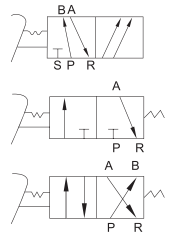
M52 Series



M52-08S1 M52-08S2 M52-08S3 M52-08S4 M52-08S5 M52-08S6 M52-08



F522-08



How to Order?

Series No.	Ways	Positions	Valve body size	Type	Port size	Valve type	Thread type
F: F series foot valve	3: 3 ways 4: 4 ways 5: 5 ways	2: 2 position	2: 2 series	Blank: No cover C: With cover	06: 1/8" 08: 1/4"	Blank: Basic type L: With lock N: New valve body LB: With lock, big valve body	Blank: G P: PT T: NPT

Order Example:

F series foot valve, 5/2 way, 2 series valve body, without cover, 1/4" port size, with lock, G thread, ERP code is: F522-08L

Product Features

- * Strong design and work in harsh environment
- * Various types are available

Specifications

Model	F322	F422	F522
Working medium	Clean air(After 40 μm filtration)		
Acting type	External control		
Lubrication	Not required		
Working pressure (MPa)	0-0.8		
Max pressure (MPa)	1.2		
Working temperature (°C)	-5-60		
Port size	1/8", 1/4"		